



aerospace  
climate control  
electromechanical  
filtration  
fluid & gas handling  
**hydraulics**  
pneumatics  
process control  
sealing & shielding



## SWO Water/oil cooler

Lightweight, compact and efficient for industrial and marine applications



ENGINEERING YOUR SUCCESS.



The Olaer Group is part of Parker Hannifin since July 1st, 2012. With manufacturing and sales in 14 countries in North America, Asia and Europe, the Olaer Group expands Parker's presence in geographic growth areas and offers expertise in hydraulic accumulator and cooling systems for target growth markets such as oil and gas, power generation and renewable energy.

# Shell & tube water/oil coolers

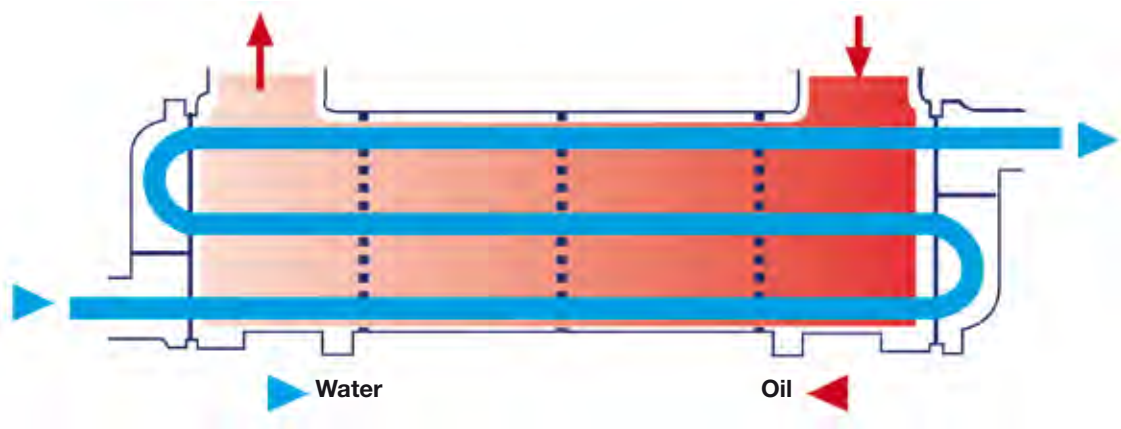
**Theory and application of shell & tube water/oil coolers**

Two fluids, of different starting temperatures, flow through the water oil cooler. One fluid flows through the internal tubes and the other flows around the tubes inside the shell. Heat is trans-

ferred from one fluid to the other through the tube walls, either from inside the tubes to the surrounding fluid or vice versa.

**GWO water/oil coolers in short:**

- **Light and compact**
- **Suitable for many applications**
- **Easy installation**
- **Cost-efficient and environmentally friendly**

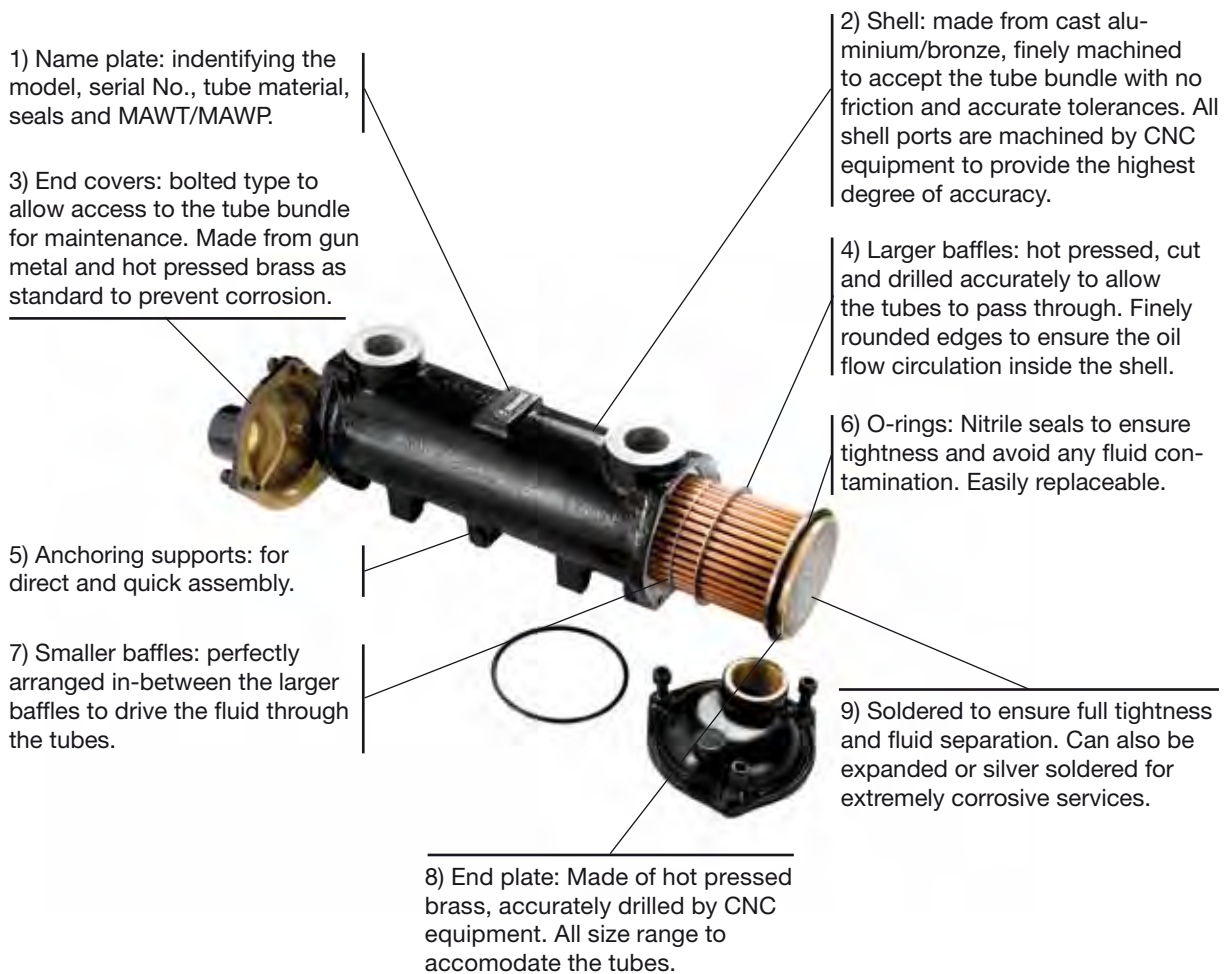


<b>Flow range:</b>	0 – 900 l/min
<b>Design Pressure:</b>	Oil side 15 bar / water side 10 bar
<b>Max working temperature:</b>	+95 °C with NBR seals
<b>Connections:</b>	¾" BSP - 3" BSP

Specifications may be changed without prior notice. Please contact Parker for specific details.



# Design attributes



## Design features

Parker SWO water/oil coolers are manufactured to cater for the most common power requirements in the hydraulics industry. The serialised manufactured units range from the smallest size (TP-A1) with 3 kW of heat dissipation power to the largest size (TP-F6) with 500 kW per average. Parker SWO Oil Coolers are of floating tube bundle design.

## Materials of construction (primary standards in italic):

### Industrial version:

- Shell: *Aluminium, Bronze*
- END COVERS: *Hot pressed brass, Bronze*

- TUBES: *Copper, CuNi 90/10*
- BAFFLES: *Aluminium*
- END PLATES: *Brass*
- O-Rings/Seals: *NITRILE*

### Marine version:

- Shell: *Aluminium, Bronze*
- END COVERS: *Hot pressed brass, Bronze*
- TUBES: *Copper, CuNi 90/10*
- BAFFLES: *Aluminium*
- END PLATES: *Brass*
- O-Rings/Seals: *NITRILE*

### Application limits

Maximum working temperature: 95 °C with NBR seals (this is the peak temperature and should not be understood as continuous service temps). Design Pressure:

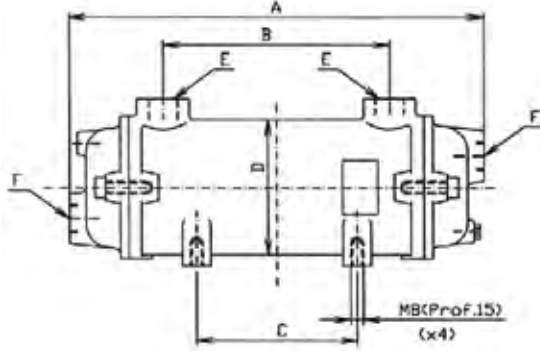
Oil side 15 bar, water side 10 bar (pressure/temperature charts should be observed).

### Installation and maintenance

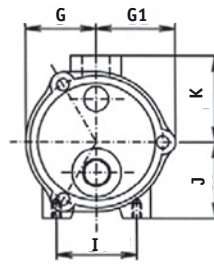
The Parker SWO Water Oil Coolers may be installed vertically or horizontally but both fluids must circulate counter to current flow. The cooler could be installed in the return line to the tank or in a closed circuit, and bypass isolation be set in place to allow for maintenance. Consult your nearest Parker distributor for complete operating and maintenance booklets if not received along with the product, alternatively download them from [www.parker.com](http://www.parker.com).



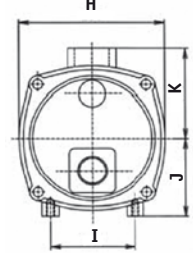
## Main dimensions and typical performance



Type A, B and C



Type D, E and F



Model	Dimensions mm											Dis-sipated Power	Oil Flow Rate	Water Flow Rate	Oil Pres-sure Drop	Water Pres-sure Drop	Sur-face	Weight
	A	B	C	D	E	F	G	G1	H	I	J							
Tp-A 1	195	72	38	86	3/4"	50	55	-	54	55	60	3	30	15	0.10	0.02	0.13	3
Tp-A 2	263	142	106	86	3/4"	50	55	-	54	55	60	6	46	23	0.19	0.05	0.22	3.5
Tp-A 3	349	228	192	86	3/4"	50	55	-	54	55	60	9	56	28	0.36	0.09	0.32	4
Tp-A 4	448	326	290	86	3/4"	50	55	-	54	55	60	13	64	32	0.60	0.13	0.46	4.7
Tp-A 5	576	454	418	86	3/4"	50	55	-	54	55	60	16	56	28	0.56	0.12	0.68	5.5
Tp-B 1	273	123	109	108	1"	60	65	-	77	65	70	8	66	33	0.16	0.02	0.33	5
Tp-B 2	355	205	190	108	1"	60	65	-	77	65	70	12	80	40	0.32	0.03	0.48	6
Tp-B 3	452	302	289	108	1"	60	65	-	77	65	70	18	104	52	0.96	0.07	0.66	7
Tp-B 4	587	437	422	108	1"	60	65	-	77	65	70	25	106	53	1	0.11	0.90	8.2
Tp-B 5	730	580	566	108	1"	60	65	-	77	65	70	29	98	49	1.04	0.14	1.16	10
Tp-C 1	372	187	93	130	1 1/4"	70	80	-	77	75	80	16	100	50	0.28	0.04	0.64	9
Tp-C 2	472	287	193	130	1 1/4"	70	80	-	77	75	80	26	120	60	0.55	0.07	0.90	10
Tp-C 3	600	416	322	130	1 1/4"	70	80	-	77	75	80	36	140	70	0.74	0.13	1.23	12.5
Tp-C 4	744	559	465	130	1 1/4"	70	80	-	77	75	80	48	160	80	1.06	0.17	1.60	14.5
Tp-C 5	922	737	643	130	1 1/4"	70	80	-	77	75	80	56	140	70	0.95	0.16	2.07	17.5
Tp-D 1	505	273	109	162	1 1/2"	-	-	177	119	95	100	40	180	90	0.40	0.07	1.58	20
Tp-D 2	634	402	238	162	1 1/2"	-	-	177	119	95	100	52	200	100	0.55	0.09	2.14	24
Tp-D 3	780	548	384	162	1 1/2"	-	-	177	119	95	100	66	220	110	0.62	0.12	2.79	27
Tp-D 4	954	722	558	162	1 1/2"	-	-	177	119	95	100	84	240	120	0.80	0.16	3.57	32
Tp-D 5	1160	928	764	162	1 1/2"	-	-	177	119	95	100	108	260	130	1	0.19	4.48	38
Tp-D 6	1364	1132	968	162	1 1/2"	-	-	177	119	95	100	120	240	120	0.96	0.21	5.38	45
Tp-E 1	675	372	239	198	2"	-	-	206	120	110	120	76	320	160	0.44	0.09	3.27	33
Tp-E 2	816	513	380	198	2"	-	-	206	120	110	120	106	360	180	0.64	0.13	4.24	39
Tp-E 3	998	696	560	198	2"	-	-	206	120	110	120	134	400	200	0.90	0.20	5.45	45
Tp-E 4	1204	901	766	198	2"	-	-	206	120	110	120	175	420	210	1.10	0.25	6.82	54
Tp-E 5	1408	1102	968	198	2"	-	-	206	120	110	120	205	400	200	1.15	0.28	8.22	64
Tp-E 6	1712	1406	1272	198	2"	-	-	206	120	110	120	240	360	180	1.10	0.28	10.27	75
Tp-F 1	754	330	236	278	3"	-	-	288	180	155	170	133	720	360	0.36	0.09	7.20	47
Tp-F 2	900	476	382	278	3"	-	-	288	180	155	170	180	780	390	0.50	0.13	9.14	57
Tp-F 3	1077	654	560	278	3"	-	-	288	180	155	170	250	840	420	0.62	0.17	11.81	68
Tp-F 4	1280	856	762	278	3"	-	-	288	180	155	170	325	900	450	0.76	0.25	14.60	79
Tp-F 5	1484	1060	966	278	3"	-	-	288	180	155	170	410	960	480	1	0.32	17.30	91
Tp-F 6	1790	1364	1270	278	3"	-	-	288	180	155	170	500	900	450	1.16	0.52	21.54	105

## DRAIN/VENT PLUGS

### WATER SIDE (END COVERS)

For series A,B,C & D      1/4" BSP  
 For series E & F      1/2" BSP

### OIL SIDE (SHELL)

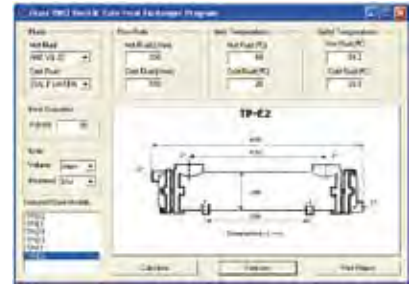
For series B,C & D      1/4" BSP  
 For series E & F      1/2" BSP

There is no drain plug in the shell for A-serie.



The table to the left shows the typical performance of the standard range of Parker models. This table should be taken as a quick reference and always supported by more detailed performance graphs or the use of our software. The table is built using the following typical performance data: Oil Outlet temperature of 50 °C, Water Inlet temperature of 25 °C

and Oil Viscosity of 38 cSt. Any other parameter would alter the typical selection. Ask you nearest Parker distributor for the software, a powerful tool which will enhance your quotations, optimise your selection process and store a process fluid data base. Pressure drop diagrams are available from Parker.



# Industrial Shell & tube water/oil cooler

Series A - F / AM - FM

Parker SWO water/oil coolers are designed in a three pass tube stack arrangement. with cooling fluid inlet and outlet on opposite sides and counter-current flows. The tube stack is of the fully floating type, thus thermal stresses are minimised while mainte-

nance operations are kept to a minimum.

The Parker range of industrial SWO water/oil coolers is suitable for any sort of heat transfer fluids, heating or cooling process fluids.



Part	Name	Material
1	Shell	Aluminium/Bronze
2	Tube Stack	
2.1	Tubes	Copper/Copper-Nickel
2.2	Tube plates	Brass
2.3	Baffles	Aluminium
	Welding	Soldered 60/40
3	End Caps	Brass/Bronze
4	Seals	NBR
5	Cover screws	Steel
6	Drain plugs	Brass

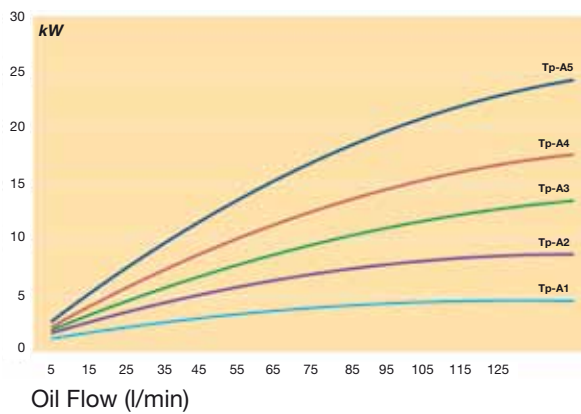
Industrial version:  
copper tubes are standard.

Marine version:  
copper-nickel tubes 90/10 are standard.

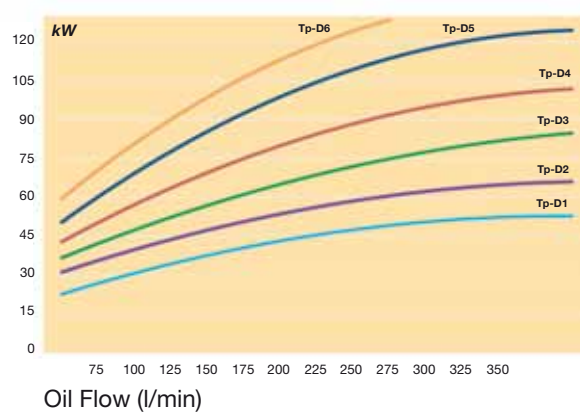


# Performance graphs

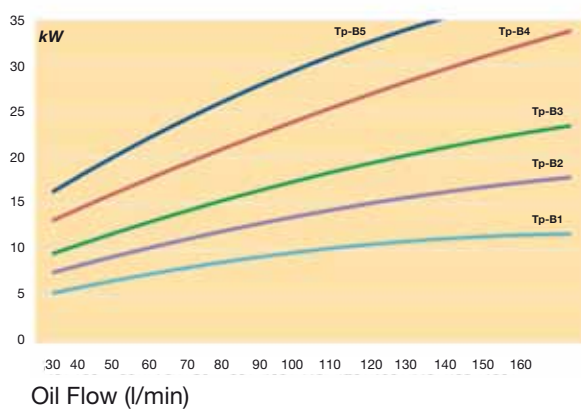
**Series A/AM**



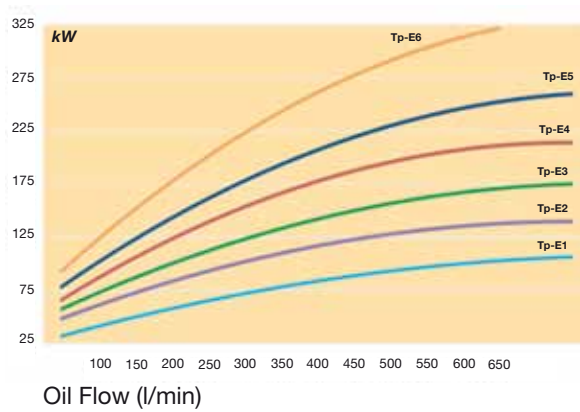
**Series D/DM**



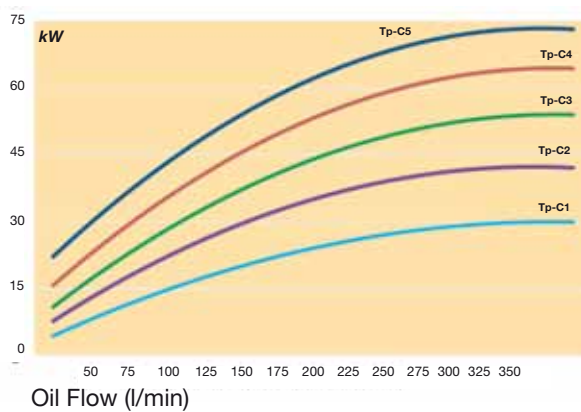
**Series B/BM**



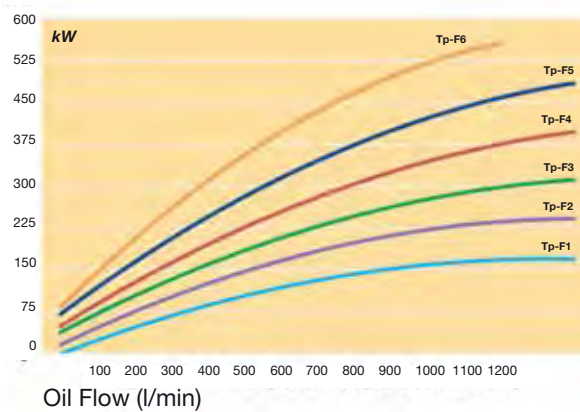
**Series E/EM**



**Series C/CM**



**Series F/FM**



Graphs were plotted using the following parameters:  $\Delta T = 25^\circ\text{C}$ , Viscosity of oil: 38 cSt (SAE 30) and water.

Temperature Correction Factors  
When temperature gap between

oil outlet and water inlet exceeds the given  $25^\circ\text{C}$  the following correction factors should be used:  
 $10^\circ\text{C}$ : 0.4 /  $15^\circ\text{C}$ : 0.6 /  $20^\circ\text{C}$ : 0.8 /  $30^\circ\text{C}$ : 1.2 /  $35^\circ\text{C}$ : 1.4 /  $40^\circ\text{C}$ : 1.6  
 (multiply kW by the suitable correction factor).

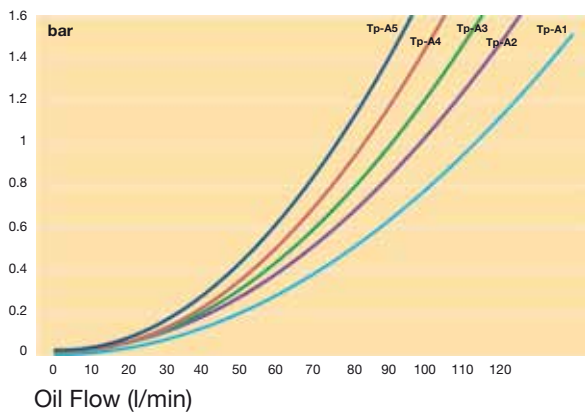
Flow Rate Correction Factors  
For water flow rates other than 50% of the oil flow rate, the following correction factors should be used: 25%: 0.8 / 100%: 1.2  
 (multiply the flow rate by the suitable correction factor).

The Olaer software is available also for units that fall outside the above curves. Data subject to technical modification without prior notice.

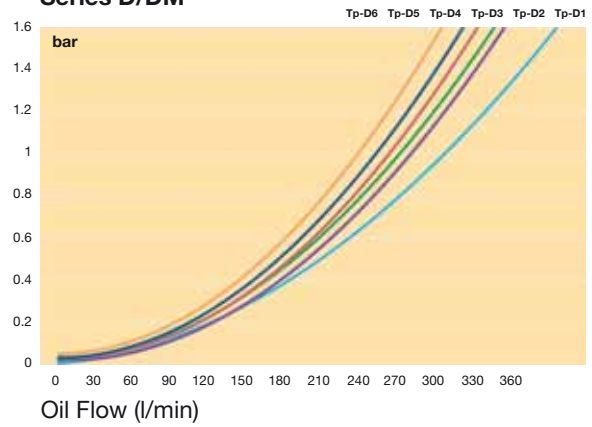


# Oil pressure drop

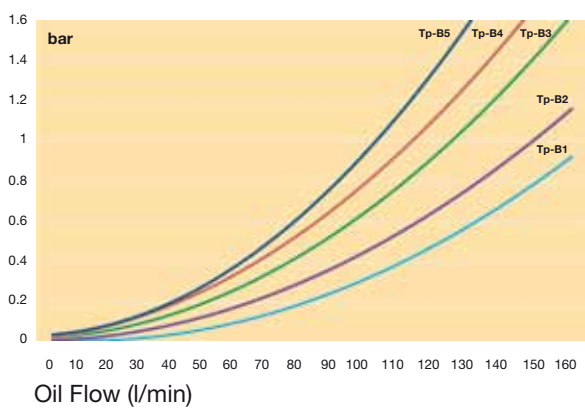
**Series A/AM**



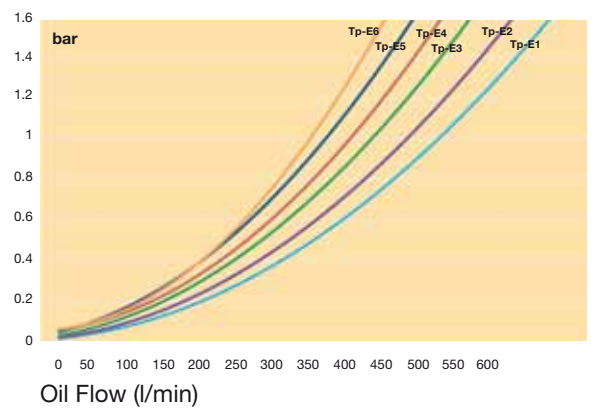
**Series D/DM**



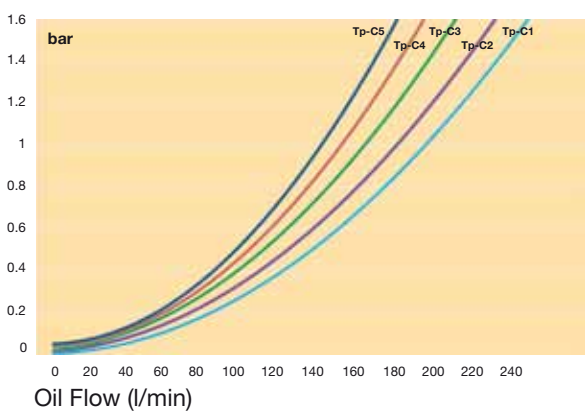
**Series B/BM**



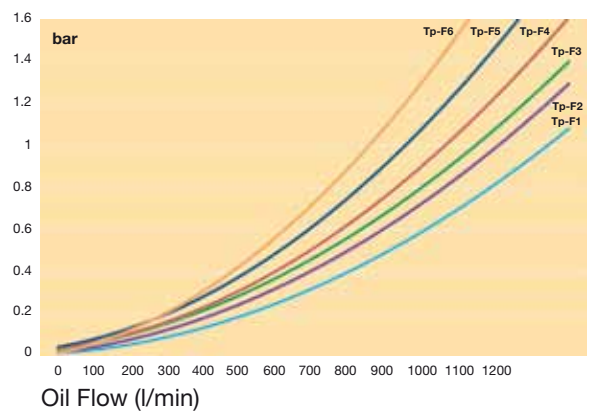
**Series E/EM**



**Series C/CM**



**Series F/FM**



# Parker Worldwide

## Europe, Middle East, Africa

**AE – United Arab Emirates,** Dubai

Tel: +971 4 8127100  
parker.me@parker.com

**AT – Austria,** Wiener Neustadt  
Tel: +43 (0)2622 23501-0  
parker.austria@parker.com

**AT – Eastern Europe,** Wiener Neustadt  
Tel: +43 (0)2622 23501 900  
parker.easteurope@parker.com

**AZ – Azerbaijan,** Baku  
Tel: +994 50 22 33 458  
parker.azerbaijan@parker.com

**BE/LU – Belgium,** Nivelles  
Tel: +32 (0)67 280 900  
parker.belgium@parker.com

**BG – Bulgaria,** Sofia  
Tel: +359 2 980 1344  
parker.bulgaria@parker.com

**BY – Belarus,** Minsk  
Tel: +375 17 209 9399  
parker.belarus@parker.com

**CH – Switzerland,** Etoy  
Tel: +41 (0)21 821 87 00  
parker.switzerland@parker.com

**CZ – Czech Republic,** Klecany  
Tel: +420 284 083 111  
parker.czechrepublic@parker.com

**DE – Germany,** Kaarst  
Tel: +49 (0)2131 4016 0  
parker.germany@parker.com

**DK – Denmark,** Ballerup  
Tel: +45 43 56 04 00  
parker.denmark@parker.com

**ES – Spain,** Madrid  
Tel: +34 902 330 001  
parker.spain@parker.com

**FI – Finland,** Vantaa  
Tel: +358 (0)20 753 2500  
parker.finland@parker.com

**FR – France,** Contamine s/Arve  
Tel: +33 (0)4 50 25 80 25  
parker.france@parker.com

**GR – Greece,** Athens  
Tel: +30 210 933 6450  
parker.greece@parker.com

**HU – Hungary,** Budaörs  
Tel: +36 23 885 470  
parker.hungary@parker.com

**IE – Ireland,** Dublin  
Tel: +353 (0)1 466 6370  
parker.ireland@parker.com

**IT – Italy,** Corsico (MI)  
Tel: +39 02 45 19 21  
parker.italy@parker.com

**KZ – Kazakhstan,** Almaty  
Tel: +7 7273 561 000  
parker.easteurope@parker.com

**NL – The Netherlands,** Oldenzaal  
Tel: +31 (0)541 585 000  
parker.nl@parker.com

**NO – Norway,** Asker  
Tel: +47 66 75 34 00  
parker.norway@parker.com

**PL – Poland,** Warsaw  
Tel: +48 (0)22 573 24 00  
parker.poland@parker.com

**PT – Portugal,** Leca da Palmeira  
Tel: +351 22 999 7360  
parker.portugal@parker.com

**RO – Romania,** Bucharest  
Tel: +40 21 252 1382  
parker.romania@parker.com

**RU – Russia,** Moscow  
Tel: +7 495 645-2156  
parker.russia@parker.com

**SE – Sweden,** Spånga  
Tel: +46 (0)8 59 79 50 00  
parker.sweden@parker.com

**SK – Slovakia,** Banská Bystrica  
Tel: +421 484 162 252  
parker.slovakia@parker.com

**SL – Slovenia,** Novo Mesto  
Tel: +386 7 337 6650  
parker.slovenia@parker.com

**TR – Turkey,** Istanbul  
Tel: +90 216 4997081  
parker.turkey@parker.com

**UA – Ukraine,** Kiev  
Tel: +380 44 494 2731  
parker.ukraine@parker.com

**UK – United Kingdom,** Warwick  
Tel: +44 (0)1926 317 878  
parker.uk@parker.com

**ZA – South Africa,** Kempton Park  
Tel: +27 (0)11 961 0700  
parker.southafrica@parker.com

## North America

**CA – Canada,** Milton, Ontario  
Tel: +1 905 693 3000

**US – USA,** Cleveland (industrial)  
Tel: +1 216 896 3000

**US – USA,** Elk Grove Village (mobile)  
Tel: +1 847 258 6200

## Asia Pacific

**AU – Australia,** Castle Hill  
Tel: +61 (0)2-9634 7777

**CN – China,** Shanghai  
Tel: +86 21 2899 5000

**HK – Hong Kong**  
Tel: +852 2428 8008

**IN – India,** Mumbai  
Tel: +91 22 6513 7081-85

**JP – Japan,** Fujisawa  
Tel: +81 (0)4 6635 3050

**KR – South Korea,** Seoul  
Tel: +82 2 559 0400

**MY – Malaysia,** Shah Alam  
Tel: +60 3 7849 0800

**NZ – New Zealand,** Mt Wellington  
Tel: +64 9 574 1744

**SG – Singapore**  
Tel: +65 6887 6300

**TH – Thailand,** Bangkok  
Tel: +662 717 8140

**TW – Taiwan,** New Taipei City  
Tel: +886 2 2298 8987

## South America

**AR – Argentina,** Buenos Aires  
Tel: +54 3327 44 4129

**BR – Brazil,** Cachoeirinha RS  
Tel: +55 51 3470 9144

**CL – Chile,** Santiago  
Tel: +56 2 623 1216

**MX – Mexico,** Apodaca  
Tel: +52 81 8156 6000

### EMEA Product Information Centre

Free phone: 00 800 27 27 5374

(from AT, BE, CH, CZ, DE, DK, EE, ES, FI, FR, IE, IL, IS, IT, LU, MT, NL, NO, PL, PT, RU, SE, SK, UK, ZA)

### US Product Information Centre

Toll-free number: 1-800-27 27 537

www.parker.com

